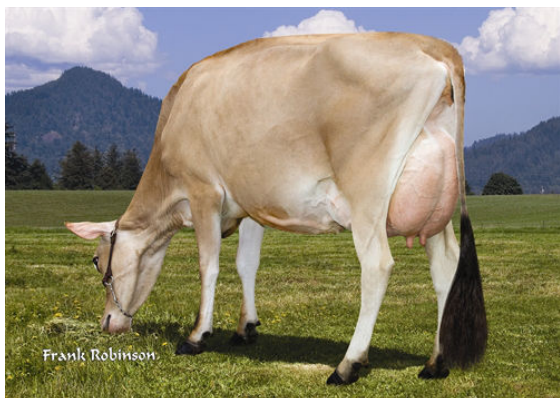




STEINHAUERS SAMSON LEMONHEAD
 SC/RV MACHETE MAID 301 VG-83%-3YR-USA
 SUNSET CANYON MACHETE
 SUNSET CANYON RENEGADE C MAID VG-88%-3YR-USA
 BW RENEGADE
 SUNSET CANYON COUNTRY L MAID 1 VG-88%-3YR-USA



SUNSET CANYON RENEGADE C MAID
 GRANDDAM



SUNSET CANYON RENEGADE C MAID
 GRANDDAM

GJPI 47 BBR 100 JH1F JNSF

Reg. #: JE840M3133234491 aAa: 432561 DMS: 234,345
 Nacimiento: 01/28/2016 Caseína Kappa: BB Caseína Beta: A2A2

| PRODUCCIÓN | | 33 Hatos | 45 Hijas | 87% Conf. | MACE-G / 04-24 | | | | |
|------------|------|-----------|----------|-----------|----------------|--------------|-----|------------|-------|
| Leche lbs | -111 | Grasa lbs | 31 | Grasa % | +0.17 | Proteína lbs | 12 | Proteína % | +0.08 |
| NM\$ | 282 | CM\$ | 290 | FM\$ | 210 | GM\$ | 277 | DWP\$ | |

SALUD Y FERTILIDAD Inmunidad 100

| | | | |
|-----------------------------|------|---------------------------|------|
| Vida Productiva | 1.3 | Inmunidad de los terneros | 99 |
| SCS | 3.00 | Tasa Preñez Vacas | -0.4 |
| Tasa de preñez de las hijas | 0.2 | Tasa Preñez Novillas | 0.4 |
| Supervivencia | 1.5 | | |
| Durabilidad Novillas | 0.4 | | |

CONFORMACIÓN MACE-G / 04-24

| | |
|---------------------|-----|
| PTA Tipo | 0.6 |
| Índice Ubres Jersey | 8.8 |

